

# African Swine Fever Country Report- Zambia

HOSTED BY THE  
GLOBAL AFRICAN SWINE FEVER RESEARCH ALLIANCE

KAMPALA, UGANDA

---

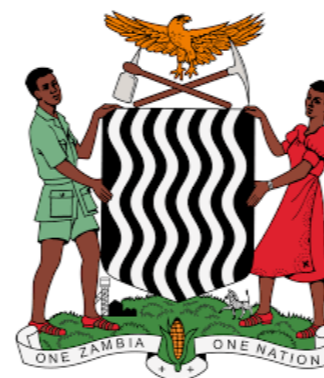
# GARA

## GAP ANALYSIS WORKSHOP

---

FEBRUARY 7-9, 2023

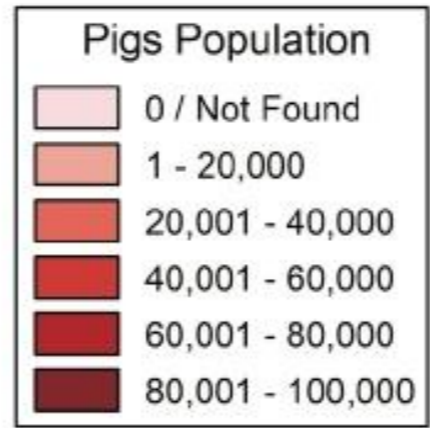
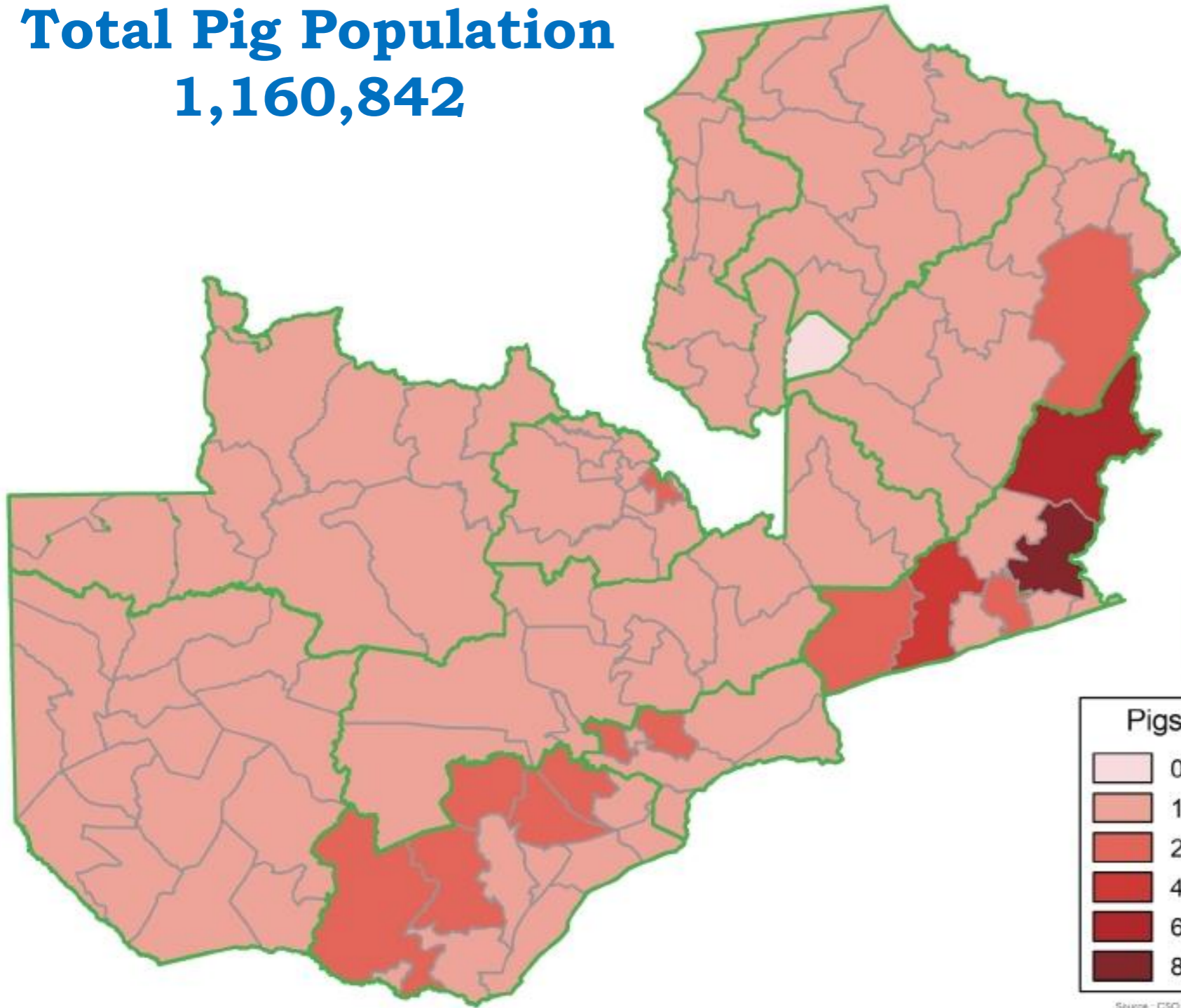
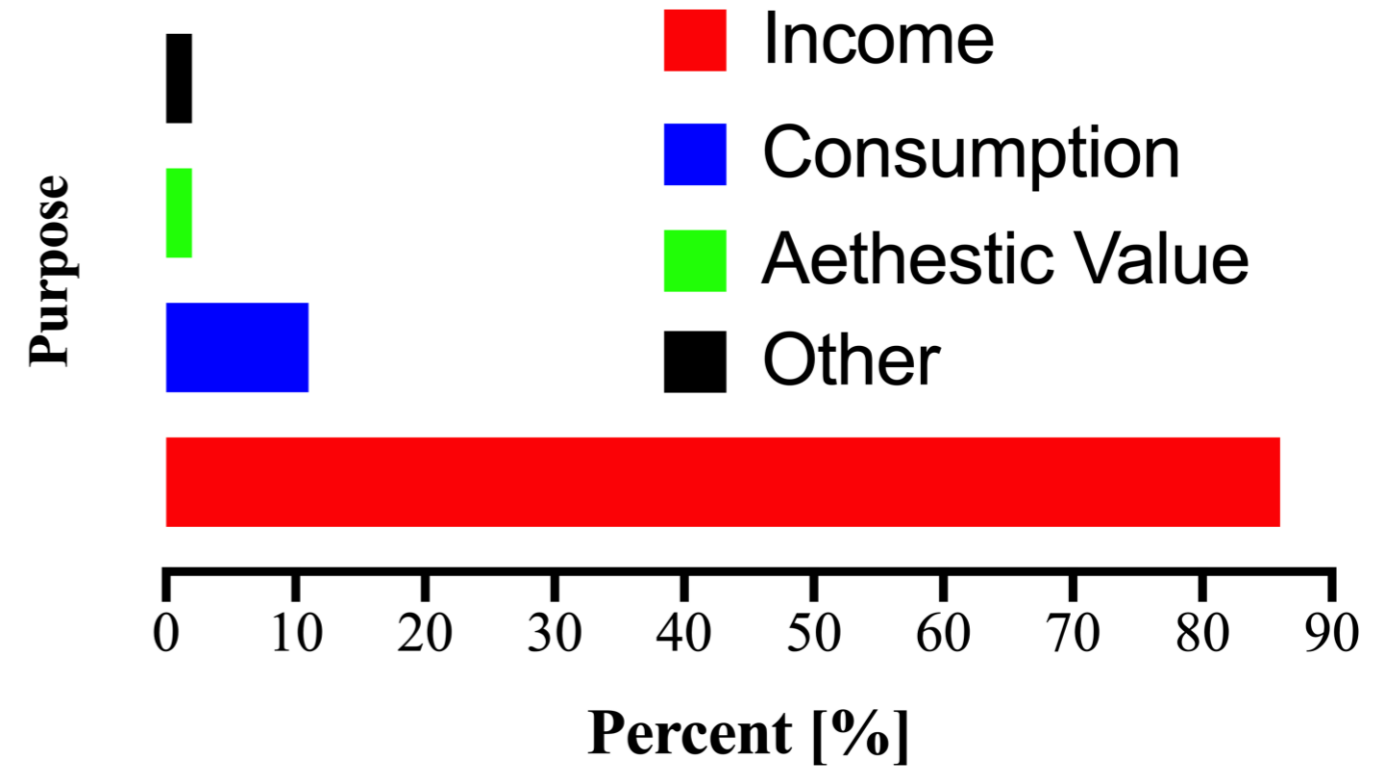
**Edgar Simulundu, MRT**  
**Herman Chambaro, CVRI**



# Size & Importance of the Pig Industry in Zambia

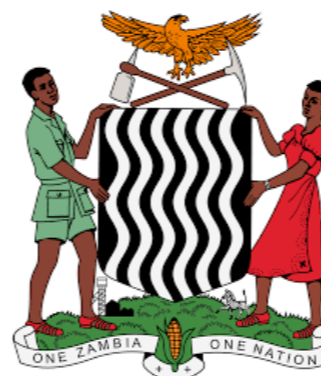
**Total Pig Population**  
**1,160,842**

## Reasons for Rearing Pigs



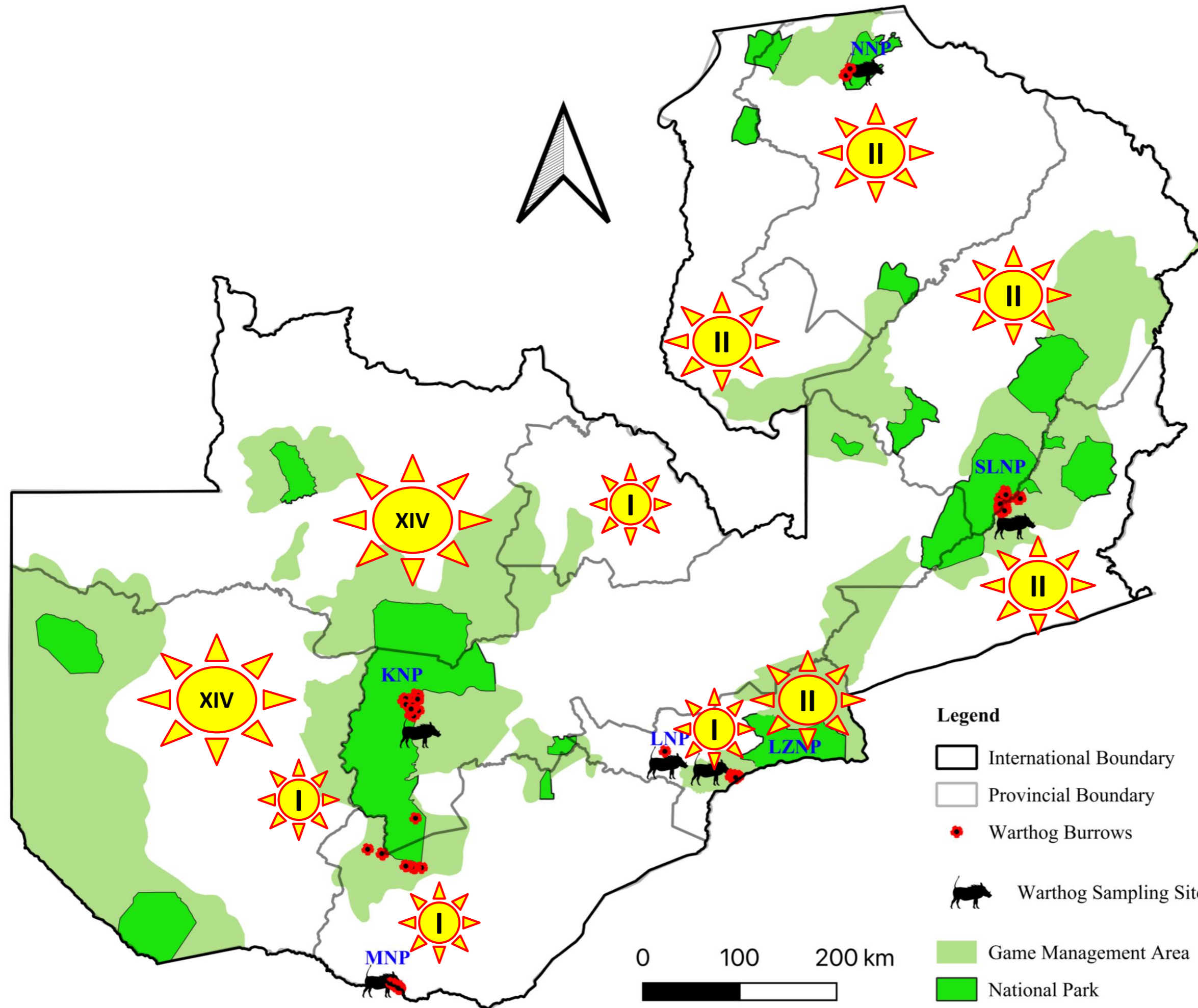
Source - CSO 2017 Livestock and Aquaculture Census

- **Pig population: ~ 1 Million**
- **96.8% raised under small-scale**
  - **Majority under rural**





# ASF Country Situation



- **7 genotypes identified**
  - I, II, VIII, XIV (Outbreaks)
  - XI, XII, & XIII (Ticks)
- **Endemic areas**
  - Sylvatic hosts
  - Indigenous pigs
  - Low mortalities
  - Asymptomatic pigs
  - High seroprevalence
    - Up to 78%
- **Non-endemic areas**
  - High mortalities
  - Exotic pigs
- **Outbreaks**
  - Largely GI & II
  - High diversity [esp. GI]

## Legend

- ▭ International Boundary
- ▭ Provincial Boundary
- Warthog Burrows
- 🐷 Warthog Sampling Sites
- Game Management Area
- National Park

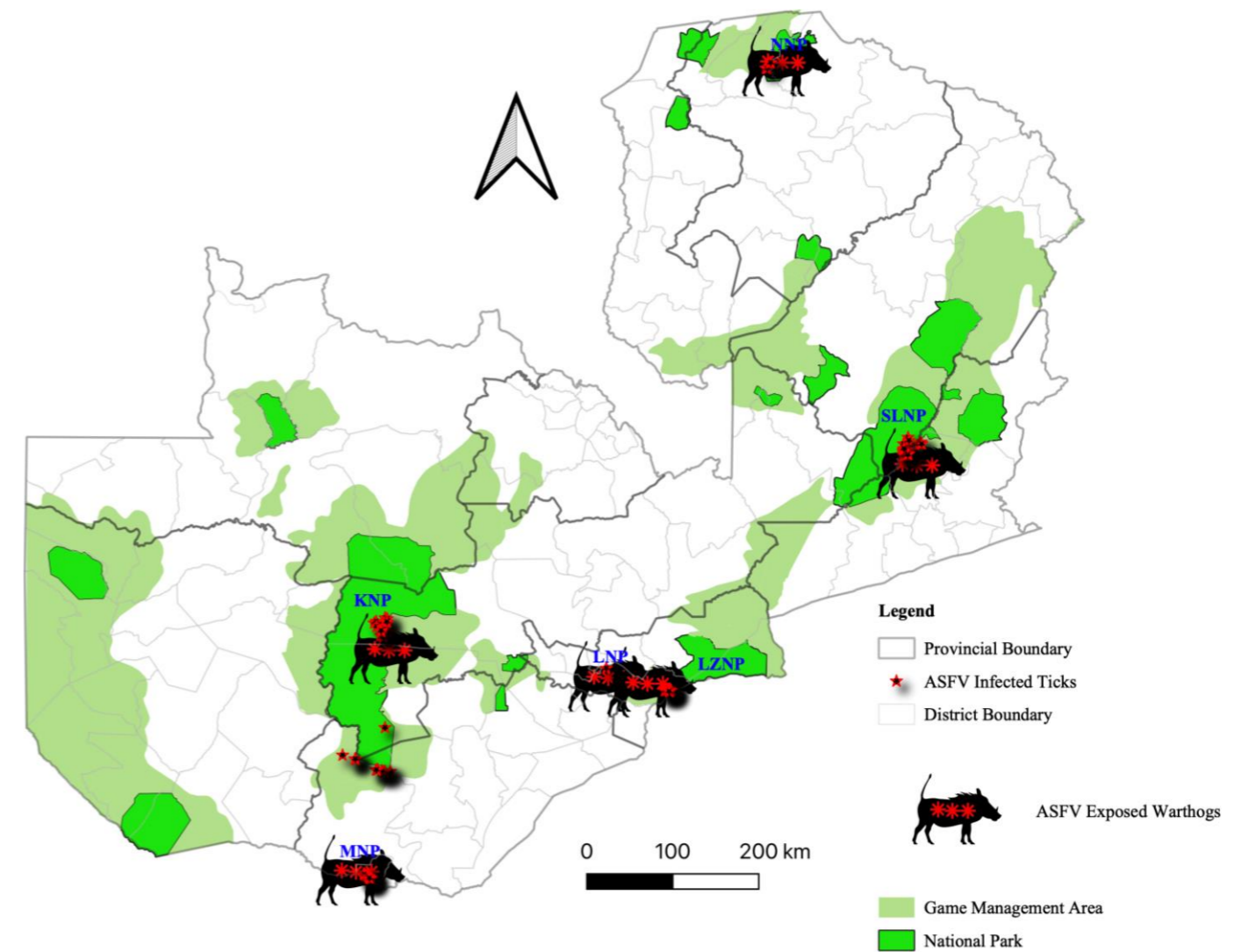




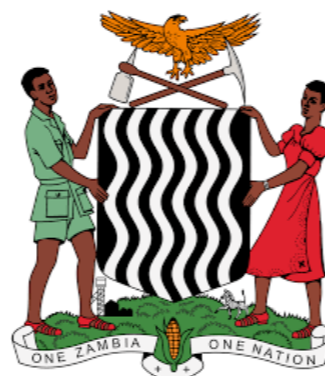
# Challenges to ASF Control



- Poor knowledge of disease epidemiology
- Presence of sylvatic hosts across the country
  - Keeping of free-range pigs in interface areas



- Presence of asymptomatic pigs in some areas
  - Legal/Illegal movement to ASF free areas
- Porous borders – Transboundary spread
- Lack of clear policy on ASF control
  - No policy for endemic areas
  - No farmer compensation





# On-Going Research

## Surveillance in Sylvatic Hosts at the Livestock-Wildlife Interface Areas



## Genetic Analysis of ASFVs from Sylvatic hosts & Domestic Pigs

